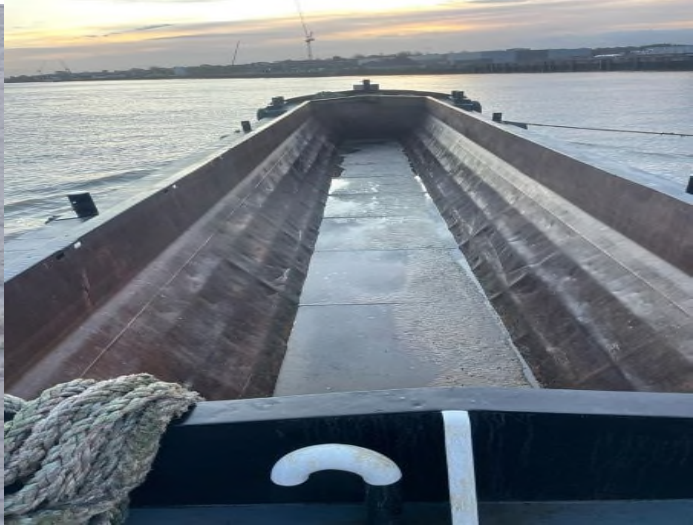


# Hopper Barges

"PROVIDENT & PROVIDENCE"



## Providence & Provident

Providence & Provident are both hopper barges, with large cargo hold areas it makes these barges ideal for carrying material of choice up to 200-ton capacity. The cargo hold length also enables steel tubes or stacked sheet pile to be accommodated with ease & with a shallow draft of 0.6m this barge is suitable for working close to shore and with an excellent capacity making these ideal for marine construction sites or for providing additional onsite storage.

### DIMENSIONS

Length: 28.0m

Beam: 5.9m

Depth: 1.6m

Draft (Light): 0.6m

### CLASSIFICATION

Port Of London Authority Category C & D

### STANDARD OUTFITTINGS

4 x Double Bollards

4 x Single Bollards

4 x Flush Mounted Deck Hatches

6 x Tank Compartments



[www.mstworkboats.co.uk](http://www.mstworkboats.co.uk)

**MST**  
MARINE SUPPORT THAMES

Marine Support Thames (M S T) Ltd

07973 820018

Email: [craig@mstworkboats.co.uk](mailto:craig@mstworkboats.co.uk)