

# DAMEN STAN TUG® 1606

## "PROSPER"



### GENERAL

YARD NUMBER	503119 and 503120
DELIVERY DATE	April 2009
BASIC FUNCTIONS	Towing, mooring, pushing and survey operations
CLASSIFICATION	Bureau Veritas I Hull • MACH TUG Coastal Area AUT UMS
DUTCH SHIPPING INSPECTION FLAG	Certificate 30 nm from coast for notation "Dagvaart" Dutch
OWNER	Damen Marine Services, The Netherlands

### DIMENSIONS

LENGTH O.A.	16.56 m
BEAM O.A.	5.54 m
DEPTH AT SIDES	2.54 m
DRAUGHT AFT	2.24 m
DISPLACEMENT	91.0 ton

### TANK CAPACITIES

FUEL OIL	14.2 m3
FRESH WATER	1.1 m3
SEWAGE	0.7 m3
SLUDGE	0.5 m3

### PERFORMANCES (TRIALS)

BOLLARD PULL AHEAD	16.1 ton
SPEED	11.2 knots

### PROPULSION SYSTEM

MAIN ENGINES	2x Caterpillar C18 TA / B
TOTAL POWER	896 bkW (1200 bhp) at 1800 rpm
GEARBOXES	2x Reintjes WAF 264L 4.5:1
PROPELLERS	2x Kaplan II fixed pitch propellers
NOZZLES	2x 1350 mm Van de Giessen "Optima" with <a href="#">st.st.</a> innerrings
RUDDERS	2x streamlined, double plates
STEERING GEAR	Powered hydraulic 2x 45°, with rudder indicator

### AUXILIARY EQUIPMENT

GENERATOR SET	Caterpillar C2.2 NA, 230 V, 18 kVA, 50 Hz
ALTERNATOR 24 V	2x main engine driven
BATTERY SETS	2x 24 V 200 Ah + change over facility
ALARM SYSTEM	Engines, gearboxes + bilge alarm, fire alarm
BILGE/GS PUMP	Elec. driven, Sterling SIHI VWSI 5013, 15 m <sup>3</sup> /hr
FUEL OIL SYSTEM	Duplex filters, water separators + SOS valve
FUEL OIL SEPARATOR	Facet
COOLING SYSTEM	Closed cooling system
WATER SYSTEM	Electrically driven freshwater hydrophore and sewage pump
FRESH WATER HEATER	230 V, 30 liter.
VENTILATION ENGINE ROOM	Mechanical ventilation in E.R.
INTERNAL FIFI	Novec 1230

### DECK LAY-OUT

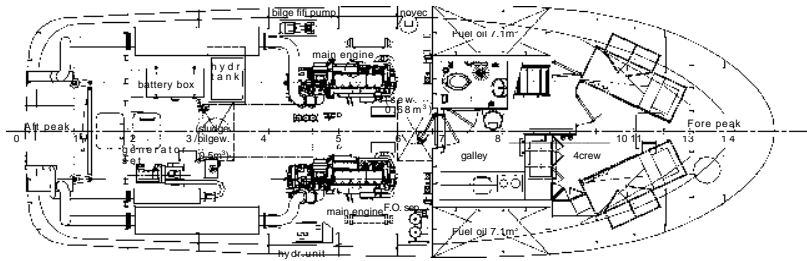
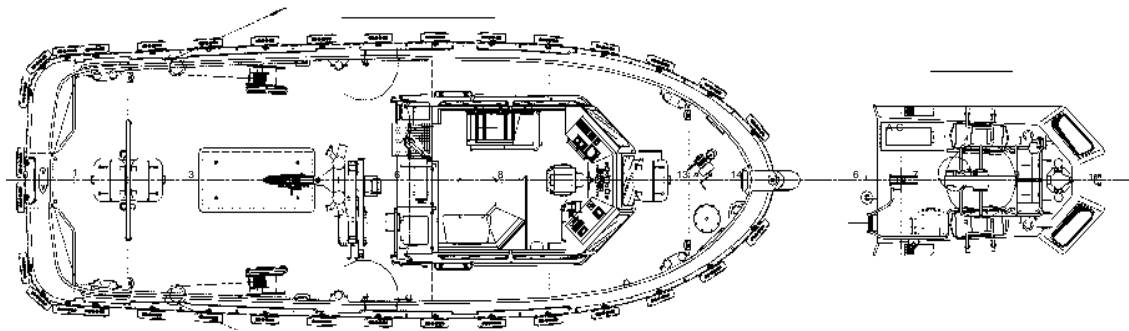
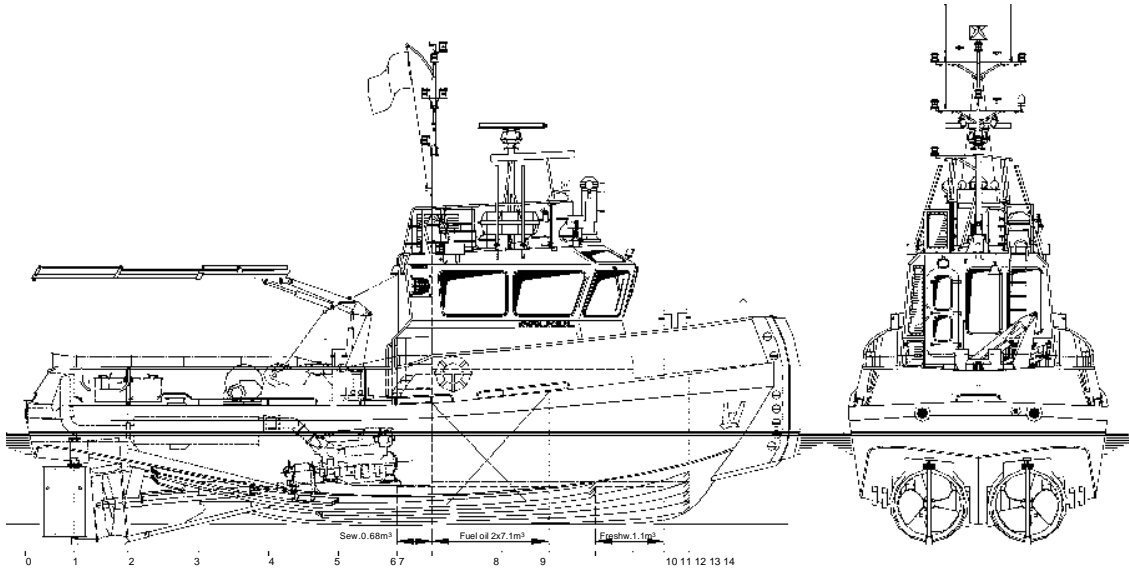
ANCHORS	2x 80 kg Pool (HHP)
CHAIN (TOT.)	100 m shortlink chain 13 mm diameter
ANCHOR WINCH	manual for one anchor
DECK CRANE	Heila HLM 3-2S, 0.5 ton at 6.9 m
COUPL. WINCHES	2 x manually operated 25 ton each
TOWING HOOK	Mampaey disc type, 25 ton
PUSH BOW	Cylindrical rubber fender Ø 380 mm
LIFERAFTS	2x for 6 persons on top deck

### ACCOMMODATION

The accommodation is completely insulated and finished with durable modern linings, floating floor and acoustical Dampa ceiling in the accommodation and wheelhouse. The air-conditioned wheelhouse is fitted with a corner settee with table and a control position. Below deck a galley, sanitary facilities and a store are provided. Windows are fitted in aluminium frames.

### NAUTICAL AND COMMUNICATION EQUIPMENT

SEARCHLIGHT	Pesch 250 W + floodlight 150 W
RADAR	Koden MDC-1810P
COMPASS	Magnetic Kotter type
GPS	Furuno GP-150
ECHOSOUNDER	Furuno FE-700
VHF RADIO	2x Sailor RT5022 with DSC + 2x handheld
NAVTEX	Furuno NX-700
GPS	Furuno FA-150
EPIRB	JotronTRON-40S
SART	Jotron, Tronsart



[www.mstworkboats.co.uk](http://www.mstworkboats.co.uk)

**MST**  
MARINE SUPPORT THAMES

Marine Support Thames (M S T) Ltd

07973 820018

Email: [craig@mstworkboats.co.uk](mailto:craig@mstworkboats.co.uk)